

Gembrook Primary School

50 Main Rd GEMBROOK 3783 Ph: 03 5968 1313
email: gembrook.ps@education.vic.gov.au
www.gembrookps.vic.edu.au

Fax: 03 5968 1548 School Office Hours 8.30am-4.30pm

Vision: To provide every student with every opportunity to be the best they can be.

Mission Statement A view to the future

Gembrook Primary School is a vibrant and aspirational education community, providing a safe and supportive learning environment that enables a personalised, engaging and challenging learning program. Our objective is for students to achieve the academic, social, emotional and physical growth to thrive in a global society



29th February, 2024

DIARY DATES

MARCH	
Friday 1st	<i>March Masters Month Begins</i>
Monday 4th	<i>Athletics Carnival Grades 3-6</i>
Thursday 7th	<i>Prep/New Parents Morning Tea</i>
Friday 8th	<i>Sausage Sizzle and Easter Raffle drawn</i>
Monday 11th	LABOUR DAY HOLIDAY
Wednesday 13th	<i>NAPLAN Writing</i>
Thursday 14th	<i>NAPLAN Reading</i>
Thursday 14th	<i>Junior Athletics afternoon 1:30pm-3:30pm</i>
Monday 18th	<i>NAPLAN L&C</i>
Tuesday 19th	<i>EDEC Athletics (Select Students)</i>
Wednesday 20th	<i>NAPLAN Maths</i>
Wednesday 20th	<i>School Council AGM</i>
Thursday 21st	<i>Close The Gap Day</i>
Friday 22nd	<i>Icy Pole Day and Easter Raffle Drawn</i>



SUN SMART 'HATS ON'
FOR ALL OUTDOOR ACTIVITIES

Hats are available for purchase at the School office (\$10)



Gembrook Primary School respectfully acknowledge the Wurundjeri people who are the traditional owners of the land on which we meet, share ideas and work together. We also pay our respects to their elders past, present and emerging.



A note from Mrs Drew....

Dear Families and Friends,

Term 1 is always a busy term and with the recent weather events, it seems even busier. I am hoping families are gaining some normality now.

Weather

Well we have certainly had an interesting few weeks with our Summer weather. I appreciate everyone's positive responses to Fire Ratings information and we hope it is clearer to understand the school's position during the higher rated days.

We will always encourage families to enact their fire plans when you feel the need.

Throughout these days, I have been particularly proud of our teachers and students to continue the learning and keeping the days as "normal" as possible.

If any families are experiencing anxiousness from the storms, there are supports available, so please contact me.

Gastro and other highly infectious illness.

I want to alert our school community that when your child becomes ill with vomiting, etc., that they must stay at home for 24-48 hours. These types of illnesses are highly contagious and affect everyone differently.

We have a student in Prep that would require hospitalisation and would become life-threatening, if they caught gastro or other highly infectious diseases. So, we ask again, if your child is unwell with gastro, please keep them home and alert the school ASAP.

Update on the Substantive Principal position

Our new Senior Education Improvement Leader (SEIL) Kerrie Anderson attended a School Council extraordinary meeting and special staff meeting to introduce the Principal recruitment process. The Substantial Principal position is currently being advertised.

Inclusive Sensory Garden

Our Inclusive Sensory Garden is almost complete. If you get an opportunity to have a look, you will see an exciting space developing very quickly. The students are very excited to explore the new playground additions. The design was based around the space being a quiet and relaxing part of the school for students to be able to touch and feel different surfaces and plants. It is coming along perfectly.

Term 1 2024

Events that have happened

‘Getting To Know You’ teacher/parent/student interviews.

GPS Swimming Carnival

Whole school Information Learning Walk and Q & A

Curriculum Day

Up and coming events for this term include:

Prep and new parent's morning tea Thursday 15th February 9:30am

3-6 Athletics Carnival

Junior Athletics

Sausage Sizzle

Easter Raffle

NAPLAN for grade 3 and 5 students

Launch of March Master Month

High Expectations – School uniform!

Thank you to a majority of students and families for adhering to our school uniform policy. I still need to remind families that black bike shorts are not part of our school uniform. A number of girls are wearing these now and they do not comply with our uniform policy. Please speak to your child about this. I would like to also remind families that naming uniforms will assist in returning any lost items.

2024 New Parents Welcome Morning Tea

All Prep parents, and parents who are new to our beautiful school are invited to a morning tea on **Thursday 7th March. at 9:30am**. This will be a great opportunity to get to know each other in a friendly and relaxed environment, so please come along and celebrate the beginnings of a wonderful experience at Gembrook Primary School.

Running Club 2024 with Mr. A

It has been awesome watching students participating in running club, and clearly this is engaging them to get to school early to be involved in an activity they enjoy. Thanks Mr. A for volunteering your time.

Time: 8.15-8.45am Tuesday mornings

Location: Meet Mr Adnam on the oval

Bring: runners, and drink bottle and any essential asthma medication.

All students and parents/ carers are welcome to come along and participate. but please only bring your child if they have the intention of improving their fitness and consistently building up running skills.

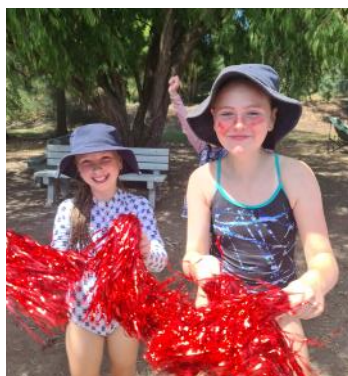
Have a great week everyone.

Kind Regards

Kerri Drew



Swimming Carnival Tuesday 20th February



School Council Snapshot from the 21st February 2024

This was the final meeting for the 2023 school council team and the first meeting for the student representative to school council for 2024. We welcome Flynn, from grade 6, to school council.

School Review

The Review Panel leader, Karen Patten, visited school council to present her report on the school review, which was conducted in the latter half of 2023. The report included the progress that was made towards the goals set in 2019, and the Goals and Key Improvement Strategies identified for 2024-2027. Councillors were asked to reflect on the school's strengths and reasons for celebration, what is exciting about the prospects for the next four years, any surprises in the report and anything that they wondered about the future.

The reviewer was enthusiastic about having the opportunity to review a school with strong direction in student learning and teacher development, a calm orderly environment, and genuine commitment to improvement. She complimented the school in their commitment to all staff, students and parents being involved in the review and the open, honest, and reflective discussion.

There were identified strengths that will underpin our continued school improvement:

- The movement towards empowering students with goal setting and understanding the why and how of their learning.
- Strengthening our teacher data evaluation literacy, specifically using formative data
- Continuing with our whole school instructional approach
- School leadership is open, honest and committed to improvements in all aspects of the school.
- Palpable positive momentum to continue the school improvement journey.

Substantive Principal Recruitment:

An extraordinary school council meeting was held on the 7th of February, which was led by the Senior Educational Improvement Leader, to inform school council on the rigorous process the Department and School Council enter into to recruit a substantive Principal. The position is currently being advertised.

Meeting Dates for 2024:

Visitors are welcome to attend school council meetings to observe the workings of council, however it is procedure to contact the Principal in advance of the meeting.

The dates for 2024 are:

1. 20th March 2024 (AGM & General Meeting)
2. 22nd May 2024
3. 19th June 2024
4. 21st August 2024
5. 18th September 2024
6. 23rd October 2024
7. 20th November 2024

Curriculum Days 2024

Curriculum days for 2024 have been confirmed as:

23/2/2024

17/5/2024

20/12/2024 (last day of school year)

Finance:

The Finance committee reported on the sound position for the months of November and December 2023 and January 2024. This included the end of calendar year position and the financial commitment summary which details where the funds held will be directed. The PFA fundraising was celebrated with the funds raised supporting new seating and items for the sensory play area which is still under development in front of the library. The required ratification of bank account signatories, order signatories, EFTPOS control and operators, and school purchasing cards has been put in place for 2024.

Policies

The following finance policies were ratified by school council.

Cash Handling Policy

Electronic Funds Management Policy

Purchasing Card Policy

Parent Refund Policy

Councillors were also directed to the 2019 Department of Education Gifts, benefits, and Hospitality Policy.

Excursions, Camps and Activities:

House Athletics Carnival was approved for Monday the 4th of March at a cost of \$14 covering bus travel and athletics track and equipment hire. This carnival will be held at the Cockatoo Athletics track.

Fundraising

Sausage sizzle Friday March 8th

Icy Pole Day Friday March 22nd

Easter raffle drawn March 22nd

Kerri Drew



PFA



BBQ SAUSAGE DAY

FRIDAY 8TH MARCH

Orders DUE Wednesday 6th March!

ORDER NOW VIA COMPASS

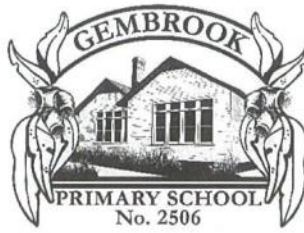
ALL SAUSAGES

\$3.00 EACH

*** Meat * Gluten Free * Vegan***

Apple & Orange

JUICE \$2.00ea



How to order for our PFA Fundraiser on Compass:

1. Open the app
2. Open the menu options and choose the 'canteen' tile
3. Select 'get started'
4. Select your student
5. Select the sitting (*For the upcoming Sausage Sizzle this will be 8/3/2023. For the upcoming Sausage Sizzle this will be 8/3/2023*)
6. Select the activity in this case: 'Sausage sizzle'
7. Select NEXT
8. Select each item you want to order and adjust the quantity using the up and down arrows
9. If the Blue customise button is next to an item please click on it – this where you will add things for example with the sausage sizzle you might choose gluten free bread.
10. Select Review Order.
11. Click on 'Add another order'
12. At this point you can add an order for another child or click on 'Confirm and Pay'
13. At the checkout you can select a credit card you already have saved in Compass or add a new credit card.

If you need to cancel an order you have made you can do so using the following steps:

1. Open the App
2. Choose the 'Canteen' tile
3. When the module opens you will see your upcoming orders
4. Click on the order your wish to cancel and select cancel. (*For the upcoming sausage sizzle you cancel up until the day before so in this case the 7th of March*)
5. This will result in a refund to the credit card you used for the purchase.



Easter



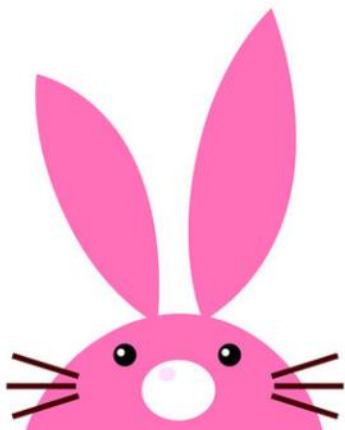
Raffle



**The PFA would like to request donations for our
annual Easter Raffle**

**Please bring your donations
to the school office**

Tickets will be on sale 7th March via Compass Canteen





PFA

EASTER RAFFLE



CHOCOLATE...chocolate...CHOCOLATE

And other great prizes!!!

Buy your tickets

NOW

TICKETS available at

Australia Post

Gembrook Bakery

Tickets

\$2- EACH

3 FOR \$5-

Draw date:

Friday 22nd March



DONATIONS FOR PRIZES
ARE BEING ACCEPTED IN
THE SCHOOL OFFICE



GEMBROOK PS
PRESENTS

MARCH MASTER MONTH

MONDAY
MARCH 25TH
2:00PM

MARCH MASTER MONTH

We are encouraging all
students and families to
participate in
March Master Month



Pick a new skill, practise it for 10
minutes each day in March. Take photos,
or record a video of your progress to
share with your class over the month.

Join us and display or perform your
talent at the March Master Month
Expo on Monday the 25th of March

JOIN IN THE FUN

More
information
to come



Academic Awards Term 1 Week 2

Reader of the Week: *Darcy 56B*

Writer of the Week: *Austin PrepA*

Speller of the Week: *Milla 12A*

Mathlete of the Week: *Mila 34B*

STARS OF THE WEEK



TERM 1 WEEK 2

Stella PrepA

Stella, what a fantastic start to prep you have had. You consistently follow instructions the first time. Thank you for keeping our classroom environment positive and calm.

Nate 12A

Wow Nate! You have made such an impressive start to grade 2. Your attitude and effort towards your learning is outstanding. You are organised with your equipment, focused during mini lessons, and you are always willing to help those around you. Thank you for being such a positive role model in our class, we are so lucky to have you.
Awesome start to the year Nate!

Ryan 12B

Ryan, you are a learning superstar! You give everything your best effort and show outstanding care for your peers. Well done on being a positive and engaged learner in our classroom. Keep up the fantastic effort Ryan!

Isla 12C

Isla, you've kicked off this year in an amazing way! I've noticed how you tackle every learning task with high expectations, giving it your all and embracing challenges with a growth mindset. Your positive interactions with your peers are truly commendable, creating a welcoming environment for everyone.
Keep up the fantastic work, Isla! I'm excited to see what the rest of the year holds for you.

Sarah 34A

Thank you, Sarah, for demonstrating kindness and thoughtfulness towards your peers, and for creating a positive and inclusive learning environment. Sarah has demonstrated emerging leadership skills that have already inspired her peers!
Well done, Sarah!

Tully 34B

Tully, your commitment to your learning is shining through. You show up every day ready to learn and always present with a positive attitude. Thank you for always displaying our school values of Respect and High Expectations. It is a pleasure to have you in 3/4B. Well done, Tully!

Hunter 34C

Thank you, Hunter, for upholding our positive behaviours for learning when in our learning space. The way you show respect is outstanding!

Stella 56A

Stella, I am so proud of your start to the year! Your peers have commented on the kindness you show others, and your ability to be on time and on task.
Well done superstar!

Ned 12B–Art

You are a watercolour superstar Ned! Not only did you trial your own wet-on-wet technique, but you were generous enough to share your wonderful idea with others! Thank you!

Cooper 12A–PE

Cooper, your effort in P.E. and commitment to running club was outstanding. You have really taken a positive stride in athletics!

Cooper 56C–Auslan

Cooper, you have been outstanding in Auslan. You demonstrated great dedication in ensuring you are accurately signing your words.

ENTERING AN ATTENDANCE NOTE ON COMPASS

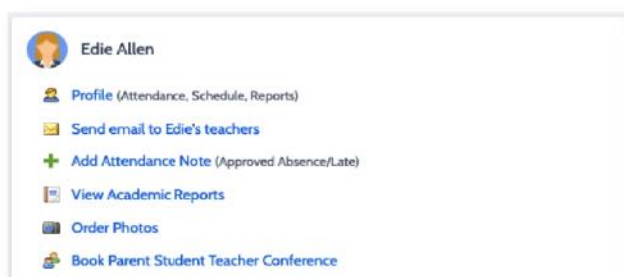
From the Compass home screen (or from your student's profile), click the **Add Attendance Note** item.

From the pop-up window

Select the reason

Enter a brief description of the absence

Select the start and finish time



What is an Attendance Note?

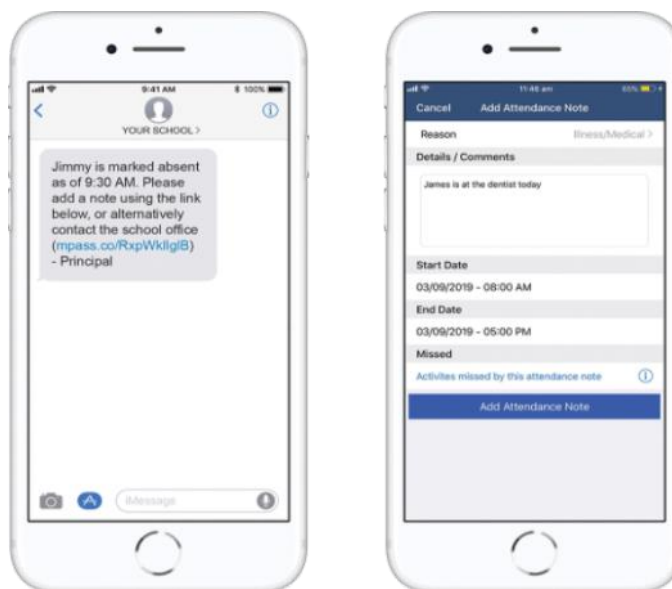
An Attendance Note is used to explain when your child is absent or late for school.

A screenshot of the 'Attendance Note Editor' form. The form is divided into several sections. The 'Note Details' section includes fields for 'Person' (Edie ALLEN), 'Reason' (Medical/Illness), and 'Details/Comment' (Feeling unwell - have a medical appointment this afternoon). The 'Important Notice' section contains a disclaimer about the use of the system. The 'Potentially Affected Sessions' section shows a table of sessions that might be affected by the absence. The 'Start' and 'Finish' fields are set to 08/02/2021, 09:00 AM and 08/02/2021, 03:30 PM respectively. At the bottom, there are 'Save' and 'Cancel' buttons.

Activity	Start	Finish
05GEN_05A (Yr 5 Gene...	08/02/2021 09:00 AM	08/02/2021 12:00 PM
05GEN_05A (Yr 5 Gene...	08/02/2021 12:30 PM	08/02/2021 03:30 PM

SMS Link

If your child is marked as absent without prior approval you will receive a message containing a link. When you follow the link, you will have the opportunity to explain the absence.



SCHOOL NEWS

Update Contact Information

Please inform the school if your contact information changes. Changes can be made on the COMPASS app or by contacting the school office. We must be able to contact you in case your child is sick or has been injured. If the primary carers / parents don't respond, the emergency contacts provided on your child's enrolment form will be contacted.

Anaphylaxis / Food Allergy

There are a growing number of children who suffer from a variety of allergies. Most serious are those allergic to foods such as nuts, nut products, and dairy products, and their severe reaction is known as anaphylaxis. At Gembrook Primary School, we have a child who is in this category.

The teaching staff have a number of procedures in place to ensure that appropriate precautions are taken. Parents are requested to be very conscious of the danger that food allergies pose for some children.

We ask you to support the health of children with food allergies by ensuring that your child understands that they should not touch food that belongs to someone else and should not share food. It would also be appreciated if families could avoid sending products containing nuts (including peanut butter, cookies, muesli bars with nuts etc) to school in your child's lunch. Peanut butter for breakfast and dinner but not for lunch! It is vitally important to please wash hands thoroughly if handling these foods before coming into the school.

If you are sending food for sharing, perhaps for a birthday, we ask that the classroom teacher is informed prior to the time, so that the parents of these children are given the opportunity to provide a special treat for them on the day. Thank you for your understanding.

Annual privacy reminder

Our school collects, uses, discloses and stores student and parent personal information for standard school functions or where permitted by law, as stated in the Schools' Privacy Policy available on the school website.

Students Late to School

ALL students who are late to school (as of 9am)

MUST collect a late pass from the office and
be signed in by a parent

BEFORE they go to class

Rolls are marked as soon as students arrive in class
This is to ensure that the school has an accurate roll of students
who are present

SCHOOL NEWS

A Department of Education Mobile Phone and Digital Devices Policy came into effect from Term 1, 2020

Students will be required to switch off and store phones or devices securely from the first bell until the last bell each day.

At Gembrook Primary School students will need to hand in their phone or device to the office when they arrive at school and collect it after the dismissal bell. Phones will be in a locked filing cabinet throughout the day.

Families should contact the school office should you need to pass an urgent message to your children prior to 3pm.

The updated school policy has been ratified by school council and is uploaded to the school website .

Conveyance Allowance 2024

Applications are now available for conveyance allowance for Term 1.

This allowance is available to Gembrook Primary School students who use a private car to travel to school and who live 4.8k or more by the shortest practicable route from the school or the last stop on the school bus route and attend the nearest appropriate school at which admission is possible.

Your application is valid for the entire school year if your circumstances do not change.

Application Forms are available at the school office and should be submitted to the school by **Friday March 8, 2024**. More information about the Conveyance Allowance Program is available at <http://www.education.vic.gov.au/school/principals/finance/Pages/conveyance.aspx>

RUNNING CLUB

Tuesdays before school: 8.15 – 8.45am

At Running Club, students will have the chance to participate in additional exercise and training in preparation for upcoming carnivals, and overall fitness.

Each week students will progressively run further and build up their endurance, and further develop their athletics skills.

Please explain to your child that this session is only for those who are committed and

interested in high intensity running and improving their fitness.

Students will need to bring a water bottle, maybe asthma medication, hat, and appropriate running shoes.

Parents/carers are also welcome to join in the fun.

I look forward to meeting you all at the oval.

Mr Adnam



Positive Behaviours for Learning (PBL) is a whole school approach for establishing the **social, cultural** and **individualised** expectations and supports needed for all students to achieve both social and academic success.



Positive Behaviours for Learning

AT ALL TIMES

RESPECT

- I use positive language in a calm voice, when I speak.
- I follow instructions the first time.
- I treat all belongings with care.
- I keep my hands and feet to myself.
- I listen to what others have to say, and wait for my turn.

HIGH EXPECTATIONS

- I have a growth mindset.
- I care for resources.
- I engage in all tasks to the best of my ability.
- I look after my peers.
- I walk quietly and calmly in roll order, when moving between classes.



Positive Behaviours for Learning

TOILETS

RESPECT

- I use locks, doors and seats for their intended purpose.
- I use one pump of soap and then wash my hands with water.
- I turn off the taps, after I wash my hands.
- I flush the toilet, when I have finished.
- I leave the toilets clean and tidy.

HIGH EXPECTATIONS

- I go to the toilet at playtime, or with staff permission.
- I go directly to and from the toilets, wearing my shoes.
- I only use the toilets when I need to.
- I let staff know if the toilet space is not neat and tidy.
- I wait quietly for my partner.



Positive Behaviours for Learning

SPORTS AREAS

RESPECT

- I include all players in all sports.
- I look after the equipment and use it appropriately.
- I share and take turns with my peers.
- I use an appropriate voice level during sport and P.E.
- I accept the umpires decision.

HIGH EXPECTATIONS

- I follow instructions and the rules of the game.
- I am a "good sport" at all times, and take defeat graciously.
- I return equipment that I borrow.
- I encourage my peers to be the best person they can be.



Positive Behaviours for Learning

ASSEMBLIES

RESPECT

- I follow all instructions quickly and quietly.
- I applaud my peers, when they receive awards.
- I actively listen during assembly.
- I sit down and stand up, when asked.

HIGH EXPECTATIONS

- I walk quietly and calmly, in roll order, to and from assembly.
- I sit where I have been asked by a teacher.
- I stand still, when we sing the national anthem.
- I sing proudly, during the national anthem and school song.



Positive Behaviours for Learning

PLAYGROUND

RESPECT

- I try my best to include others.
- I play safely and use school equipment as intended.
- I eat my rubbish-free food outside the library.
- I care for the environment.

HIGH EXPECTATIONS

- I ask a yard duty teacher when I need help.
- I stay in the designated play areas.
- I use music time to go to the toilet, wash my hands and get a drink.
- I return to class before the bell.
- I am a SunSmart student.



Positive Behaviours for Learning

LEARNING SPACES

RESPECT

- I focus on the teacher during mini lessons.
- I make others feel welcome and part of our school team.
- I am organised with my equipment.
- I ask permission before leaving the classroom.
- I pack up after myself and keep learning spaces tidy.

HIGH EXPECTATIONS

- I stay focussed on my learning and try my best.
- I take care and pride in my work.
- I am honest and take responsibility for my actions.
- I move between lessons quickly and quietly.
- I am on time and on task.

SCHOOL LUNCH ORDERS

GEMBROOK PRIMARY SCHOOL THURSDAY LUNCH ORDERS TERM 1 2024

	Weekly Lunch Special \$5.50	Weekly Treat Special \$3.00	Juice \$3.00
1ST FEB	Savoury Scroll Tomato, cheese and herbs	Shortbread Cookie	Apple
8TH FEB	Chicken Schnitzel Wrap With lettuce, mayo and cheese.	Choc Chip Cookie	Pineapple
15TH FEB	Sausage Roll With Tomato sauce	Fairybread Cookie	Orange
22ND FEB	Cheesy Savoury Muffin With spinach, capsicum and carrot.	Gingerbread Cookie	PLEASE NOTE Due to items being prepared in Bulk in a short amount of time. We can unfortunately not make alterations or substitutions to the menu items. If a week has 2 options and none is selected, the vegetarian option will be provided to your child automatically.
29TH FEB	Pizza 1 - Hawaiian. 2 - Margherita.	Apple Muffin (DF) (V)	
7TH MARCH	Penne Pasta Bake With Napoli, spinach and cheese.	Shortbread Cookie	
14TH MARCH	Beef Slider With lettuce, cheese and tomato sauce.	Cookies & Cream Slice	
21ST MARCH	Cheesy Zucchini and Bacon Slice	Mint Slice	

HOW IT WORKS

ORDER ONLINE VIA OUR WEBSITE

Select your order from the School Lunch Section Only.
Add Student's name and class in comments.

PLACE AND CHECK-OUT ORDER BETWEEN 4PM TUESDAY AND 9.00AM THURSDAY

EMERGENCY MANAGEMENT AT GPS



Schools on the Bushfire At-Risk Register and Category 4



School preparedness and pre-emptive actions for the bushfire season

Fire danger ratings indicate how dangerous a fire would be if one started in those conditions and provide clear direction on the safest options for preserving life. They can be a trigger for action in the community and for school and household level fire plans.

Schools and children's services listed on the Department of Education and Training's Bushfire At-Risk Register (BARR), and those at some lower risk of bushfire or grassfire on the Category 4 list, will be closed when a Catastrophic fire danger rating day is forecast in their Bureau of Meteorology district.

Gembrook Primary School has been identified as a BARR school and our school will close when there is a Catastrophic Fire Danger Rating in the CENTRAL fire district.

Schools and early childhood services listed on the Department of Education and Training's Bushfire At-Risk Register (BARR) and those at lower risk of bushfire or grassfire on the Category 4 list take pre-emptive actions on elevated fire danger days to minimise the risk of being caught in a fire in these conditions. The category of risk (per the BARR or Category 4 list) determines the actions that the school or early childhood service will need to take on days of elevated fire danger.

Our school will enact its pre-emptive action plan and also plan to close, in liaison with the Regional Director, on a day forecasted as Extreme Fire Danger Rating in our local government area (LGA), Cardinia Shire.

The department will advise our school of the potential for a **Catastrophic fire danger rating** as information becomes available, however the pre-emptive closure will be **confirmed by 1pm the day prior to Catastrophic fire danger day**. Fire danger ratings are forecast by the Bureau of Meteorology up to four days in advance.

Should a Catastrophic day be forecast, we will notify you of the closure by an SMS, COMPASS and email. If we are unable to ascertain whether our message has been delivered, we will attempt to contact you by telephone. A hard copy letter will be provided if time allows. Please ensure we have your current contact details, including your mobile phone numbers.

Closure of the school due to a forecast Catastrophic day will be CONFIRMED ON THE DAY PRIOR and we will provide you with this advice before the end of the school day.

Once confirmed, the decision to close will not change, regardless of improvements in the weather forecast.

This is to avoid confusion and help your family plan alternative care arrangements for your child. It is also important to note that:

- No staff will be on site on days where the school is closed due to a forecast Catastrophic day.
- Out-of-school-hours care will also be cancelled on these days.
- School camps will be cancelled if a Catastrophic fire danger rating day is forecast for the Bureau of Meteorology district in which the camp is located, or if the travel involves passing through areas that have Catastrophic fire danger.
- All bus routes that travel through the Catastrophic area will be cancelled.
- Depending on which fire weather district is impacted, bus route cancellations may affect our school.

As part of preparing our school for potential hazards such as fire, we have updated and completed our Emergency Management Plan cleared our facility's grounds and gutters of debris.



Schools on the Bushfire At-Risk Register and Category 4



School preparedness and pre-emptive actions for the bushfire season Page 2:

Families are encouraged to enact their Bushfire Survival Plan on Catastrophic fire danger rating days. **On such days, children should never be left at home alone or in the care of older children.**

The Country Fire Authority (CFA) advises that when Catastrophic days are forecast, the safest option is to leave the night before or early on the morning of the Catastrophic day. Please ensure your plan includes alternative care arrangements for your children in the event that our school is closed.

You can access current information about school and early childhood services closures, including those due to elevated fire danger, on the Department of Education and Training's website – see <http://www.education.vic.gov.au/about/programs/health/pages/closures.aspx>

Multiple sources that offer information on emergencies are listed below:

- VicEmergency app – that can be downloaded on your android and iOS mobile devices
- VicEmergency Hotline (1800 226 226)
- Website <https://emergency.vic.gov.au>
- Facebook (<https://www.facebook.com/vicemergency>)
- Twitter (<https://twitter.com/vicemergency>)

- ABC local radio, Sky News and other emergency broadcasters

CSEF NEWS



FINANCIAL ASSISTANCE INFORMATION FOR PARENTS

Every Victorian child should have access to the world of learning opportunities that exist beyond the classroom. The Camps, Sports and Excursions Fund helps ensure that no student will miss out on the opportunity to join their classmates for important, educational and fun activities. It is part of making Victoria the Education State and the Government's commitment to breaking the link between a student's background and their outcomes.

CAMPS, SPORTS & EXCURSIONS FUND (CSEF)

School camps provide children with inspiring experiences in the great outdoors. Excursions encourage a deeper understanding of how the world works while sports teach teamwork, discipline and leadership. All are a part of a healthy curriculum.

CSEF is provided by the Victorian Government to assist eligible families to cover the costs of school trips, camps and sporting activities.

If you hold a valid means-tested concession card or are a temporary foster parent, you may be eligible for CSEF. A special consideration category also exists for asylum seeker and refugee families. The allowance is paid to the school to use towards expenses relating to camps, excursions or sporting activities for the benefit of your child.

The annual CSEF amount per student is:

- \$125 for primary school students
- \$225 for secondary school students

MORE INFORMATION

For more information about CSEF visit:

<https://www.education.vic.gov.au/about/programs/Pages/csef.aspx>

HOW TO APPLY

New applicants should contact the school office to obtain a CSEF application form or download from the website below.

If you applied for CSEF at your child's school last year, you do not need to complete an application form this year unless there has been a change in your family circumstances.

You only need to complete an application form if any of the following changes have occurred:

- **new student enrolments;** your child has started or changed schools this year.
- **changed family circumstances;** such as a change of custody, change of name, concession card number, or new siblings commencing this year.

Check with the school office if you are unsure.



Latest application date 23/6/2024, the sooner the application is made the sooner the funds may become available.

Happy Birthday

February/March



19th Hunter 56A
21st Josh 12C
22nd Hazel PrepB
23rd Ari PrepB
24th Isla 12C
24th James 12A
25th Liam 34A
25th Anna 56B
28th Josie 12B
3rd Emmi-Lou 12B
3rd Abbey 34A
7th Evita 56A



COMMUNITY NOTICES

GEMBROOK COCKATOO JUNIOR FOOTBALL CLUB

2024 SEASON LAUNCH

MEET YOUR COACH

SIGN UP ON PLAYHQ

SKILLS SESSION

SUNDAY FEBRUARY 25TH
GEMBROOK REC RESERVE
1:00PM-3:00PM
BBQ SUPPLIED

Join us to kick off our 2024 season. Meet your coaches, get your registration sorted on PlayHQ, purchase your gear, have a snag and join in a skills session run by our senior club coaching team.

skills session @ 1:30pm- no footy boots

 Gembrook Cockatoo Junior Football Club
 gembrookjuniors@outereastfn.com.au



Ready to play in
Season 2024?

**REGISTRATIONS NOW OPEN
FOR JUNIORS & SENIORS**



Make new friends, learn a
new sport and join a
community!

Scan the QR Code to join us
for Season 2024.

Search Monbulk Rangers Soccer Club



EMERALD
SECONDARY COLLEGE

2024 OPEN NIGHT

**OUR
Commitment**

Quality Teaching and Learning
Positive Relationships
Personalised Learning
Student Opportunities

Tuesday, 5th March
6:30pm – 7:30pm
**Emerald Performing
Arts Centre**

425 Belgrave-Gembrook Road, Emerald VIC 3782
t 5748 5388
e2 emerald.sci@education.vic.gov.au
www.emerald.vic.edu.au

COMMUNITY NOTICES



Remedy Lab.

Cosmetic Nurse Matilda

Shop 1/74 Main Street,
Gembrook

m. 0433 556 800

f Remedy Lab Aesthetics

@remedylab_aesthetics



Supported by
Cardinia
Cardinia Shire Council

Calling All Families!
Help Us Support Our Local
Emergency Services!

Supported by Cardinia Council with full support
from the local CFA and SES



Would you like to make a difference in your community while capturing timeless memories with your loved ones? We're looking for local hills families to **take part in a special photography project. "HILLS WITH HEART"**. For a \$100 contribution - to be 100% donated to the local CFA or SES of your choice, this is what you will receive:

📷 **Family Photo Session:** Imagine the bond you share with your family, expertly captured to last a lifetime. You will have this moment forever.

🖼️ **Archival Print in an 11x14" Mat:** Receive a stunning archival cotton print of your favourite family portrait, beautifully presented in an 11x14" mat for display in your home.

📖 **A place in our "Hills with Heart" exhibition:** Your family's portrait will be featured in our first Hills with Heart exhibition, showcasing the unity and compassion of our hills community and the love you share with your family. - Hills Hub this Sept.

📖 **Page in the Hills with Heart Photo Book:** Forever immortalise your family's contribution in our exclusive photo book, commemorating the collective support of families like yours for our local emergency services.

Your contribution not only supports the amazing men and women who serve our community but also creates lasting memories for your family to treasure.

Join us in making a difference today!
Apply now to find out more. Places are limited so please be quick. www.sharpmemories.com.au/hills-with-heart
Together, let's show our gratitude and support for our local heroes. ❤️



2024 Parklea Pakenham & District Agricultural & Horticultural Show -
Saturday, 16 March, 2024

cordially invites you to enter the

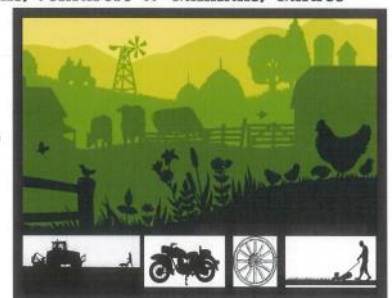
SECTION 0 ART DISPLAY

Theme: Wheels on the Farm
SPONSORED BY PAKENHAM TROPHIES

**Childcare/Kindergartens, Primary/Secondary Schools,
Joey/Cubs/Scouts/Venturers & Gumnuts/Guides**

NO ENTRY FEE
EXHIBITS MUST BE
AT THE
PAKENHAM HALL
BY 4PM, THURSDAY,
14 MARCH, 2024

***TROPHIES**
PRESENTED
IN HALL 3PM
ON SHOW DAY*



NOTE: DISPLAYS MUST BE PICKED
UP BY 10 AM SUNDAY, 17 MARCH

AREA: 3 METRES WIDE x 2.2 METRES HIGH
OR FREESTANDING MODEL
(MAXIMUM 1 METRE SQUARE FLOOR SPACE)

ENQUIRIES: pakenhamshow1@bigpond.com